

MAJESTIC FREEWAY BUSINESS CENTER RIVERSIDE COUNTY, CA

INDUSTRIAL WAREHOUSE SPACE AVAILABLE FOR SALE OR LEASE



BUILD-TO-SUIT

- Bldg 21: 106,552 SF
- Bldg 22: 108,872 SF
- Offices to Suit
- ESFR Fire Sprinkler System
- Warehouse Lighting to Suit
- Ample Auto & Trailer Parking
- Immediate Access to I-215 via Cajalco Road & Harley Knox Boulevard



For more information, contact:

Taylor Talt
D-(562) 654-2734 C-(626) 660-8829
R.E. License #01901707 (CA)
Ttalt@MajesticRealty.com

John Semcken
D-(562) 948-4306 C-(562)-556-1887
R.E. License #00979758 (CA)
JSemcken@MajesticRealty.com

Ed Konjoyan
D-(562) 948-4318
R.E. License #01403186 (CA)
EKonjoyan@MajesticRealty.com



MAJESTIC FREEWAY BUSINESS CENTER

RIVERSIDE COUNTY, CA

BUILDING 21: 106,522 SF
22650 Oleander Avenue, Perris, CA

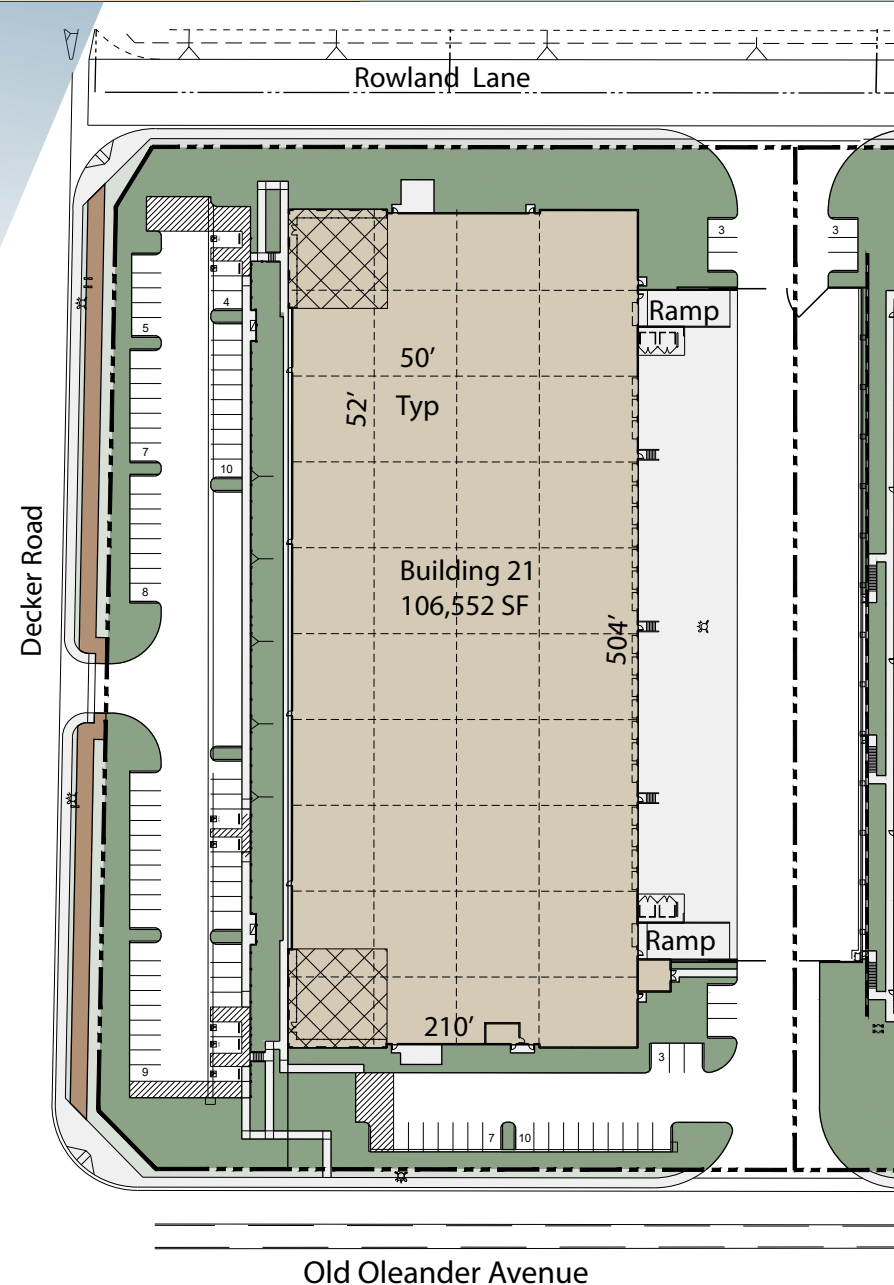
32'
Clear
Height

21
Dock High
Doors

99
Auto
Parking
Stalls

BUILDING 21 SPECS

Total Size	106,552 SF
Loading	Single Loading
Column Spacing	50' x 52' Typical Bay
Speed Bay:	60'
Ramps	2 Grade Level Ramps
Building Depth	210'
Sprinklers	ESFR



MAJESTIC FREEWAY BUSINESS CENTER

RIVERSIDE COUNTY, CA

BUILDING 22: 108,872 SF
22530 Oleander Avenue, Perris, CA

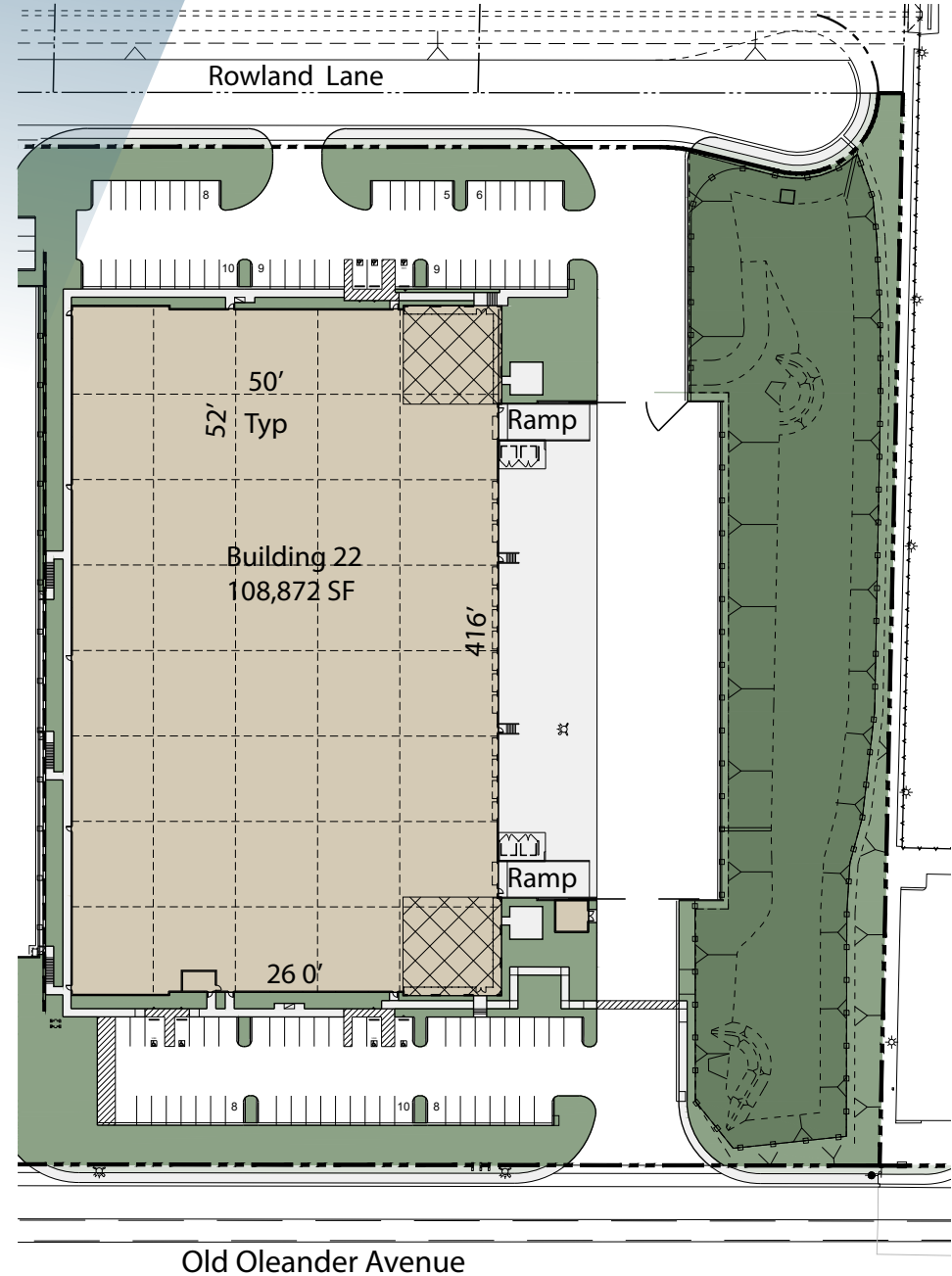
32'
Clear
Height

14
Dock High
Doors

99
Auto
Parking
Stalls

BUILDING 22 SPECS

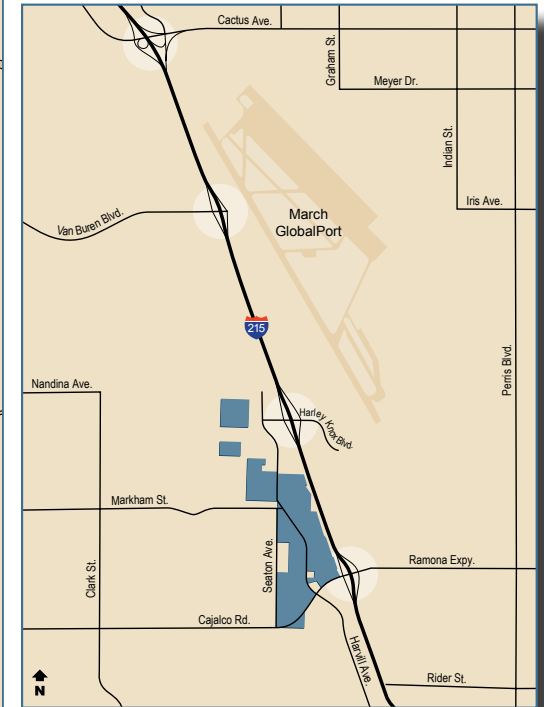
Total Size	108,872 SF
Loading	Single Loading
Column Spacing	52' x 50' Typical Bay
Speed Bay:	60'
Ramps	2 Grade Level Ramps
Building Depth	260'
Sprinklers	ESFR



MAJESTIC FREEWAY BUSINESS CENTER

RIVERSIDE COUNTY, CA

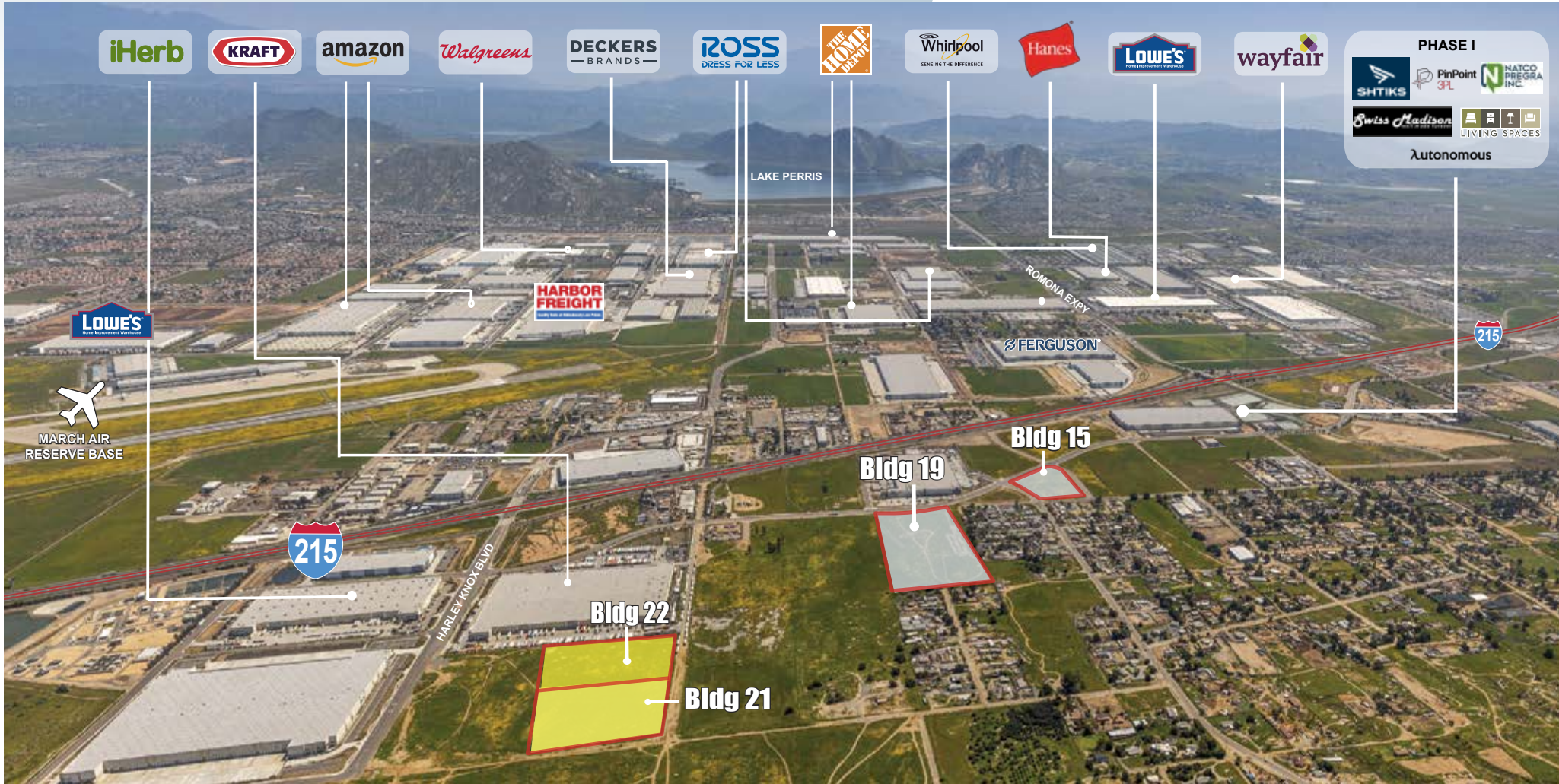
LOCATION



The Majestic Freeway Business Center is located between Harley Knox Boulevard and Cajalco Road on the I-215 Freeway in Riverside County, California.

MAJESTIC FREEWAY BUSINESS CENTER RIVERSIDE COUNTY, CA

CORPORATE
NEIGHBORS



This statement is based upon information which we believe to be correct and is obtained from sources we regard as reliable but we assume no liability for errors or omissions therein.