



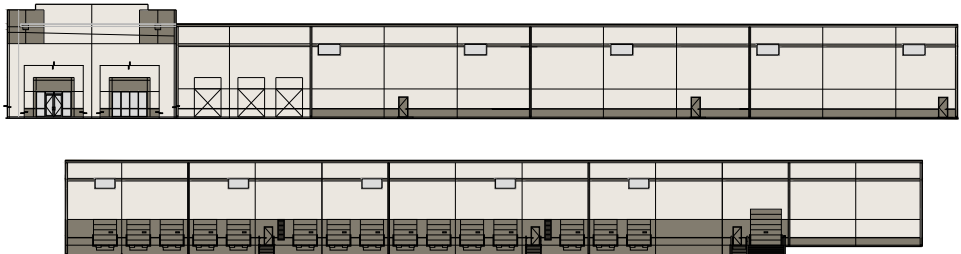
AVAILABLE FOR LEASE | PHASE 1 BUILDING #6 - 94,710 SQUARE FEET



» BUILDING FEATURES:

- **Clear Height:** 28'
- **Sprinkler System:** ESFR
- **Loading:** 22 Dock High Door Positions
 - Dock Packages to Suit
 - 1 Ground Level Door
- **Warehouse Lighting:** To Suit
- **Truck Court:** 235' Clear & Fully Secured
- **Trailer Parking:** 74 Spaces
- **Auto Parking:** 41 Spaces

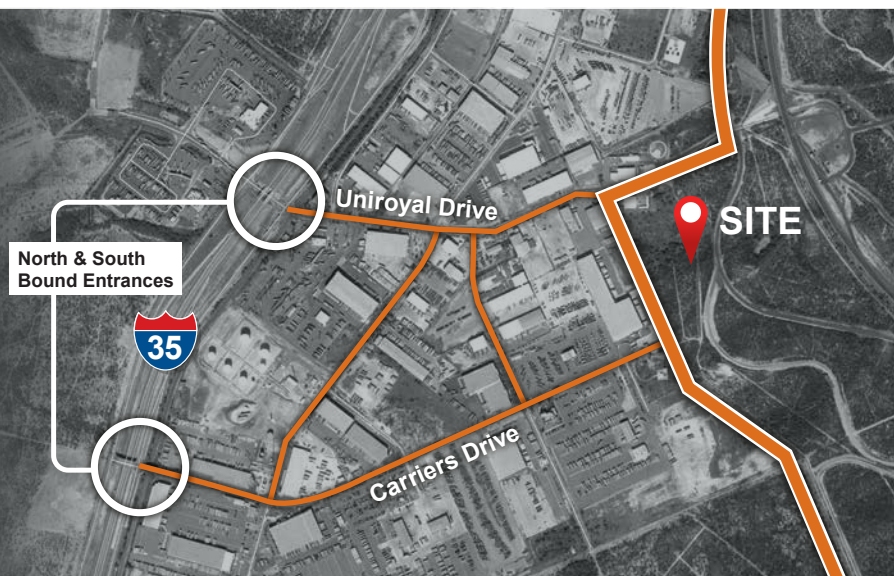
1317 Carriers Drive, Laredo, TX

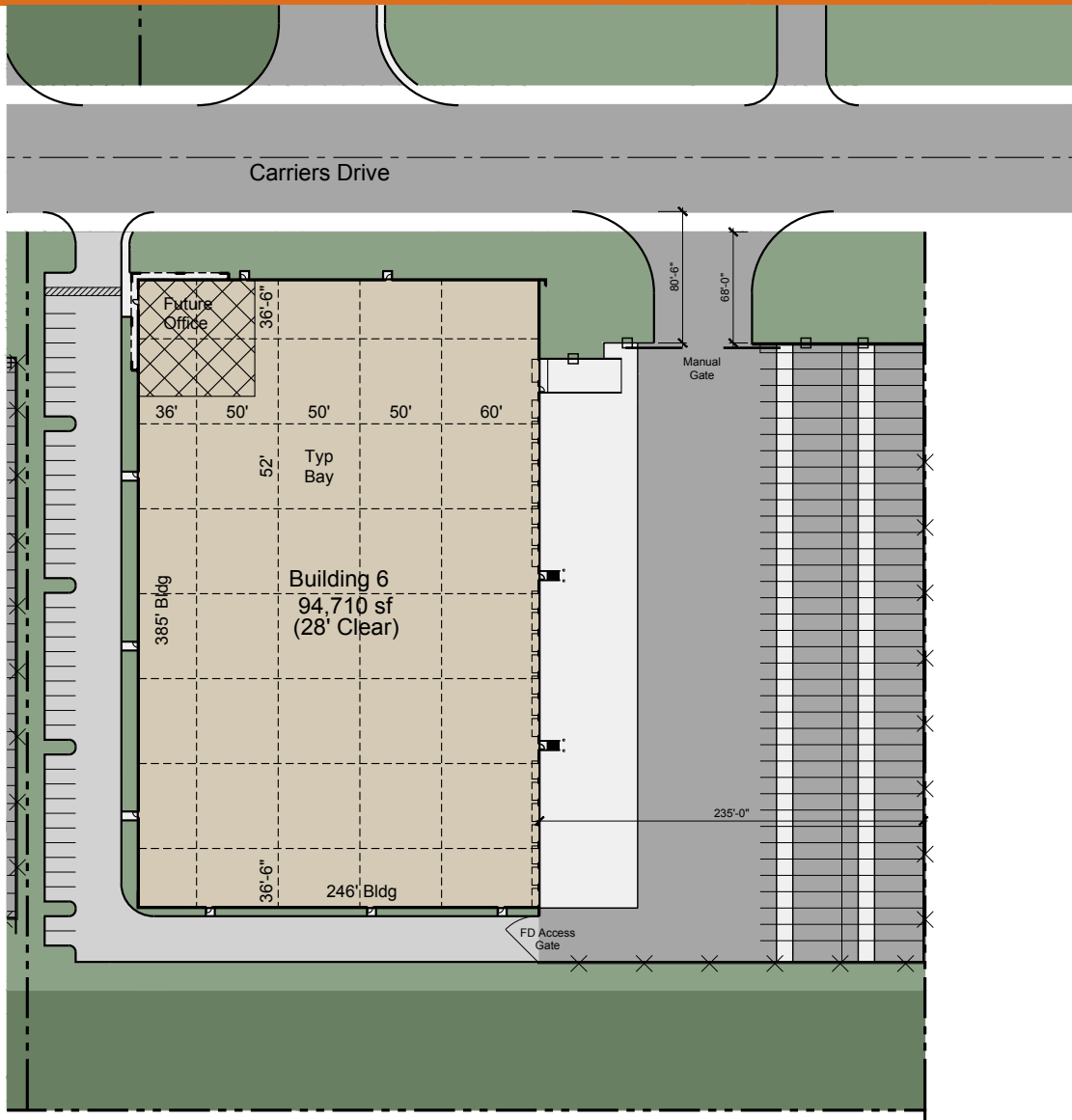


PHASE 1 CONCEPTUAL ELEVATIONS

» PORT GRANDE FEATURES:

- Up to 2 Million SF+ Buildings
- Expansion Capabilities
- Immediate access to Union Pacific Intermodal
- 10 miles to Commercial Border Crossings
- Fully Gated and Secured Building
- Lot Sales Available
- 1 Acre - 500 Acres Available





AVAILABLE FOR LEASE | PHASE 1 BUILDING #6 - 94,710 SQUARE FEET

FOR ADDITIONAL INFORMATION:

Kyle Valley - 562.948.4339
kylevalley@majesticrealty.com

Carlo Molano - 956.717.9090
carlom@forumcre.com

Thomas B. Simmons - 562.948.4347
tsimmons@majesticrealty.com



1410 Medical Loop • Suite 1B • Laredo, Texas 78045-9998

Tel: 956.717.9090 • www.forumcre.com

13191 Crossroads Parkway North • Sixth Floor • City of Industry, CA 91746-3497

Tel: 562.692.9581 • **Fax:** 562.695.2329 • www.MajesticRealty.com



This statement is based upon information which we believe to be correct and is obtained from sources we regard as reliable but we assume no liability for errors or omissions therein.