

Central Austin Business Park

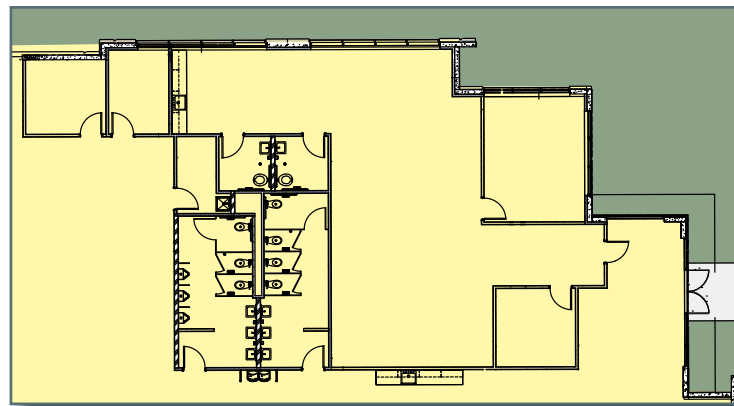
BUILDING 2, SUITE 100: 55,629 SF

9800 Decker Lane, Austin, Texas

BUILDING 2 SPECS

Newly Constructed Building 2023

Total Building Size	100,337 SF
Available Space	55,629 SF
Office Space	2,612 SF
Loading	Rear Loading
Column Spacing	50' x 52' Typical Bay 60' x 52' Speed Bay
Ramps	1 Grade Level Ramp
Building Depth	210'
Sprinklers	ESFR



Office Layout
2,612 SF

135'
Truck
Court
Depth

32'
Clear
Height

16
Dock High
Doors

120
Parking
Stalls

**Fully Air-Conditioned
Warehouse Space**

